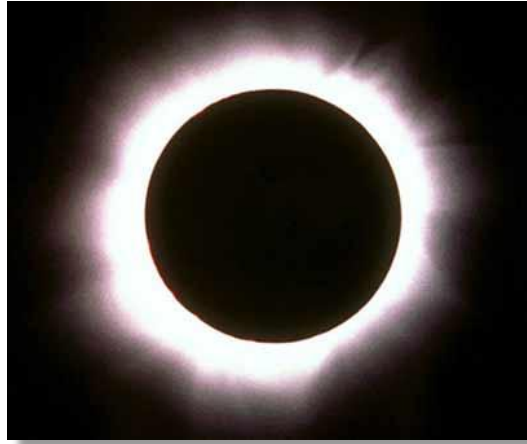
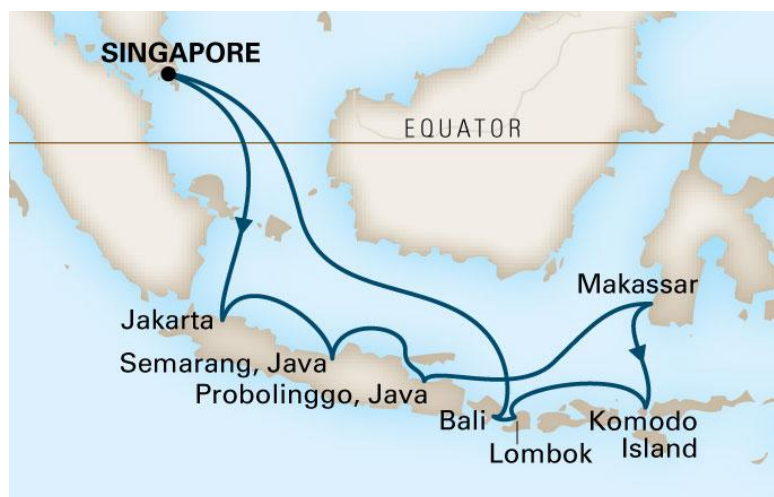


# ***Total Solar Eclipse Cruise 2016***

29 February – 16 March 2016



*Join us on this wonderful 16 night cruise as we sail from Singapore to view the Total Solar Eclipse on 9 March 2016. This trip includes one night pre-cruise in a 5\* hotel in Singapore. Port visits en route include Jakarta, Java, Komodo Island and beautiful Bali. For the eclipse itself, we will view this at sea off the Indonesian coast to maximise our chances of clear skies for this spectacular solar event - a singularly memorable experience not to be missed.*



## Your Hotel in Singapore



The Swissotel The Stamford is a Luxury City Hotel, and one of the tallest hotels in Southeast Asia. Strategically located in the heart of Singapore's shopping, dining and entertainment districts and with the City Hall Mass Rapid Transit (MRT) train station and other major transportation nodes at its doorstep, this five-star deluxe hotel is the gateway to explore Singapore's landscapes at your convenience.

You can experience breathtaking views of Singapore's bustling cityscape and nearby islands of Malaysia and

Indonesia from the hotel. The hotel is equipped with high-speed Internet access in the rooms and wireless access in the other public areas of the hotel.

## Itinerary

Day	Date	Port	Arrive	Depart
1	29 Feb 2016	Check in to Swissotel The Stamford		
2	01 Mar 2016	Embark in Singapore		04:00 PM
3	02 Mar 2016	At Sea		
4	03 Mar 2016	Tanjung Priok, Jakarta, Indonesia <sup>VX</sup>	06:00 AM	05:00 PM
5	04 Mar 2016	Semarang, Java, Indonesia <sup>VX</sup>	10:00 AM	08:00 PM
6	05 Mar 2016	At Sea		
7	06 Mar 2016	Probolinggo, Java, Indonesia <sup>TR VX</sup>	08:00 AM	05:00 PM
8	07 Mar 2016	At Sea		
9	08 Mar 2016	Ujung Padang, Sulawesi, Indonesia <sup>VX</sup>	08:00 AM	04:00 PM
10	09 Mar 2016	<b>Makasar Strait / Total Solar Eclipse</b>	07:00 AM	10:00 AM
11	10 Mar 2016	At Sea		
12	11 Mar 2016	Komodo Island, Indonesia <sup>SX TR VX</sup>	08:00 AM	03:00 PM
13	12 Mar 2016	Lembar, Lombok, Indonesia <sup>TR VX</sup>	10:00 AM	11:00 PM
14	13 Mar 2016	Benoa (Denpasar), Bali, Indonesia <sup>TC VX</sup>	07:00 AM	05:00 PM
15	14 Mar 2016	At Sea		
16	15 Mar 2016	At Sea		
17	16 Mar 2016	Singapore <sup>ON</sup>	08:00 AM	
18	17 Mar 2016	Disembark Singapore	06:00 AM	

### Port Notes:

<sup>CO</sup> CRUISING ONLY

<sup>ON</sup> OVERNIGHT

<sup>SX</sup> ACCESS TO SHORE LIMITED TO

SHORE EXCURSIONS

<sup>TC</sup> TIMES SUBJECT TO TIDAL

CONDITIONS

<sup>TR</sup> TENDER REQUIRED

<sup>VX</sup> VISA REQUIRED

## Your Ship

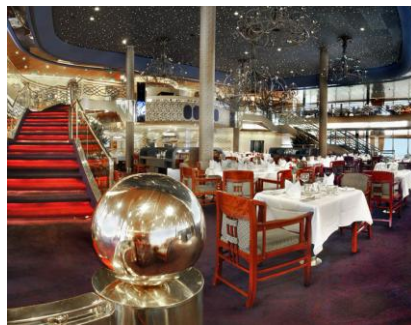
### ms Volendam



The beautiful garden theme of ms Volendam is reflected in an artful floral motif throughout the ship's spacious public rooms and elegant staterooms. "Flowers" can be found in abundance in the forms of floral fabrics and tapestries, as well as huge vases of tropical floral arrangements and chrysanthemums. Holland America Line has also drawn on its collection of incredible artwork to enhance the interior of the ship's public spaces. Everything from pre-Columbian fetishes and sculptures to Renaissance-era fountains imported from Italy are included in its hallway galleries. At the heart of the ship an elegant sculpture by Luciano Vistosi, inspired by the myriad of moods and colours of a kaleidoscope, greets visitors in a soaring three-story atrium.

### Dining & Activities

**Rotterdam Dining Room:** features impeccable service and an extensive wine list. Five-course menus include continental cuisine, vegetarian and low-carb options.



**Pinnacle Grill:** This intimate reservations-only venue offers an elegant, sophisticated dining experience. Featuring premium Double R Ranch Beef, inspired seafood dishes and many select wines rated "Excellent" by *Wine Spectator* - as well as distinctive Bvlgari® china, Riedel® stemware and Frette® linens.



**Canaletto Restaurant:** Named for a famous 18th-century Venetian artist, Canaletto is your destination onboard for an intimate Italian dinner. The evening begins with the chef's selection of antipasti with a taste of the delicious fare and personal, polished service to follow.

**Lido Restaurant:** offers a relaxed ambiance for all three meals and features a variety of fresh, cooked-to-order specialties

**The Culinary Arts Center, presented by *Food & Wine Magazine*:** this state-of-the-art demonstration kitchen offers interactive gourmet cooking lessons taught by Master Chefs or culinary guests

**Explorations Café, powered by *The New York Times*:** a comfortable, coffee house environment where you can browse through an extensive library, surf the Internet and check email or simply read the morning paper.

**Greenhouse Spa & Salon:** features heavenly beauty and wellness rituals. Enjoy a facial, hot stone massage, steam in a thermal suite and have your hair and nails done for a special evening.

**Frans Hals Show Lounge:** features talented vocalists, dancers, illusionists, comedians and variety acts

**Digital Workshop, powered by Windows®:** Guests will be able to "show and tell" their vacation memories, learning how to share all their digital memories through email, blogging and social networking — so friends and family can see where they've been cruising even before they return home. Free workshops taught by Microsoft-trained "techsperts" make it easy and fun, even for novices

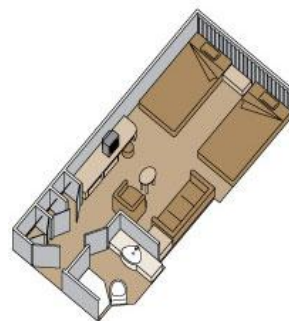
**Crow's Nest:** offers sweeping 270° views during the day, and a hip, fashionable nightclub each evening

**Club HAL®:** our dedicated youth facilities and activities for kids ages 3 - 12; activities are supervised and age appropriate

**The Loft and The Oasis:** designed exclusively for teens (13 - 17) to have fun, socialize and hang out with people their own age

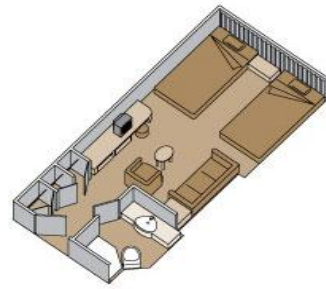
## **Staterooms**

### **Interior Stateroom (Cat. J)**



2 lower beds convertible to 1 queen-size bed and shower. All L-, N- & NN-category staterooms also have 1 sofa bed & pullman upper. M- & MM-category staterooms also have 1 sofa bed. Approximately 182–293 sq. ft.

### Ocean View Stateroom (Cat. C, D & DA)

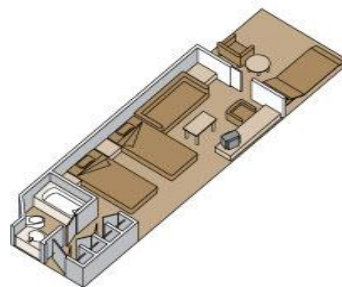


2 lower beds convertible to 1 queen-size bed, bathtub, shower. All FF-category staterooms also have 1 sofa bed & pullman upper. Approximately 140–319 sq. ft.

All Stateroom amenities include:

- Luxurious beds featuring Sealy® Premium Euro-Top mattresses and finely woven cotton linens
- Deluxe waffle weave and terry cloth bathrobes for use during your voyage
- 100% Egyptian cotton towels
- Premium massage showerheads
- 5X magnifying make-up mirrors and salon-quality hair dryers
- Fragrant soaps, lotions, shampoo and other bath amenities from Elemis Aromapure
- Complimentary fresh fruit on request
- Elegant ice bucket and serving tray for in-stateroom beverages
- Flat-panel TV and DVD player
- Ice service, shoeshine service and nightly turndown service

### Vista Suites (Cat. A)

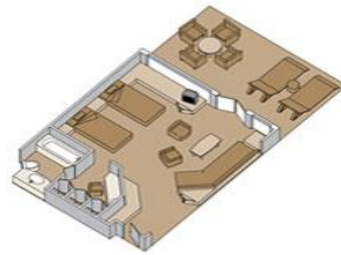


2 lower beds convertible to 1 queen-size bed, whirlpool bath & shower, sitting area, private verandah, mini-bar, refrigerator, floor-to-ceiling windows. All A-category staterooms also have 1 sofa bed. Approximately 297–379 sq. ft. including verandah.

Include all the stateroom amenities, plus:

- A variety of firm, medium and soft pillows
- No-host mini-bar for easy entertaining
- Personalized cruise stationery
- Oversized bath towels
- One-touch telephone concierge service
- Fresh flowers
- Complimentary DVD library

### Neptune Suites (Cat. SA)



2 lower beds convertible to 1 king-size bed, whirlpool bath & shower, large sitting area, dressing room, private verandah, 1 sofa bed for 2 persons, mini-bar, refrigerator, floor-to-ceiling windows. Approximately 558–566 sq. ft. including verandah.

Suite amenities include:

- Neptune Lounge: A very special amenity exclusively for guests cruising in a Neptune and Pinnacle Suite, the industry-leading Neptune Lounge features a private place to relax, socialize with other suite guests and enjoy the personalized service of a concierge. The fleet-wide lounges provide worktables, large screen television, library, sofas and chairs, refreshments throughout the day and wi-fi for a small charge. One-Touch 24-hour Concierge Service is available when the Neptune Lounge is closed.
- Complimentary laundry, pressing and dry cleaning throughout your cruise
- Complimentary sparkling wine served in the Neptune Lounge upon embarkation
- Complimentary bottled water provided in suite at embarkation
- Gorgeous corsages and boutonnieres for the first formal night
- Cold hors d'oeuvres served before dinner each evening on request
- Binoculars and umbrellas for your use on the cruise
- Cocktail party with ship's officers
- Priority boarding for tendered ports of call
- Special disembarkation service
- Priority dining and seating requests
- Exclusive daily breakfast service
- High tea service in suite on request
- Elegant wooden clothing brush, lint remover and shoehorn for keeping clothing immaculate
- Fragrant bath salts and exfoliating loofah mitt for an invigorating shower experience

## PRICE

<b>Cabin Type</b>	<b>Category</b>	<b>Price per person GBP</b>
Neptune Suite	SA	<b>6,215</b>
Vista Suite	A	<b>3,899</b>
Ocean View Stateroom	C	<b>2,785</b>
Ocean View Stateroom	D	<b>2,665</b>
Ocean View Stateroom	DA	<b>2,595</b>
Interior Stateroom	J	<b>2,145</b>

### **Price Includes:**

- 16 nights aboard the ms Volendam on a shared cabin basis including all meals, sailing from Singapore including visits to all Ports mentioned
- 1 night pre-cruise in the 5\* Swissotel The Stamford Singapore on a bed & breakfast basis
- Evening Entertainment in the show lounge
- Complimentary \$37.50 on board credit per person
- All Taxes, Fees & Port Expenses
- Eclipse of the Century Cruise Tour Manager

### **Price Excludes:**

- International Flights
- Shore excursions
- Port transfers to/from your ship
- Travel Insurance
- Drinks and sundry items

**TO BOOK NOW, CALL 020 7766 5237 (from the UK) or +44 20 7766 5237 (from outside the UK) or email [info@eclipseofthecentury.com](mailto:info@eclipseofthecentury.com)**

### **Eclipse of the Century**

Cameo House  
11 Bear Street  
London WC2H 7AS  
UNITED KINGDOM

Tel: +44 (0)20 7766 5237

Fax: +44 (0)20 7766 5268

[www.eclipseofthecentury.com](http://www.eclipseofthecentury.com)



**Eclipse of the Century is the trading name of Japan Journeys Limited which is fully bonded with the TTA (Travel Trust Association) under Membership No. U3078**